

# Angular Contact Ball Bearings

Bearing No. : **NACHI 7218**

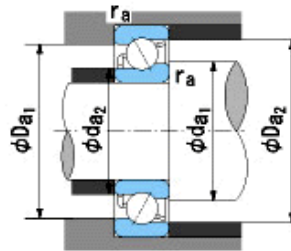
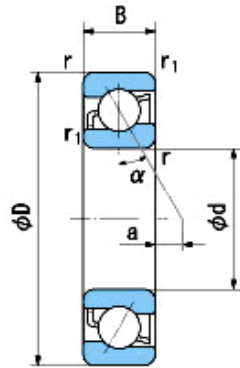
■ Bearing Type

■ Clearance

■ Tolerance Class

**Dimensions**

d = 90<sup>0</sup><sub>-0.020</sub>  
 D = 160<sup>0</sup><sub>-0.025</sub>  
 B = 30<sup>0</sup><sub>-0.200</sub>  
 r = 2~3.5  
 (Radial Direction)  
 r = 2~5  
 (Axial Direction)  
 r1 = 1~1.9  
 (Radial Direction)  
 r1 = 1~3  
 (Axial Direction)  
 a = 21.1



**Dimensions**

da1(min) = 100  
 da2(min) = 96  
 Da1(max) = 150  
 Da2(max) = 154  
 ra(max) = 2  
 ra1(max) = 1  
 Mass = 2.30 kg

Basic Dynamic Load Rating Cr :	<b>118,000</b> N	INNER RING	OUTER RING
Basic Static Load Rating Cor :	<b>103,000</b> N	O.D.Surface Runout with Side :	-
Limiting Speed ;		Axial Runout with Bore :	-
Grease Lubrication :	<b>3,500</b> min <sup>-1</sup>	Axial Runout with Raceway :	-
Oil Lubrication :	<b>4,700</b> min <sup>-1</sup>	Width Variation :	<b>0.025</b> <b>0.025</b>
		Radial Runout :	<b>0.025</b> <b>0.045</b>